

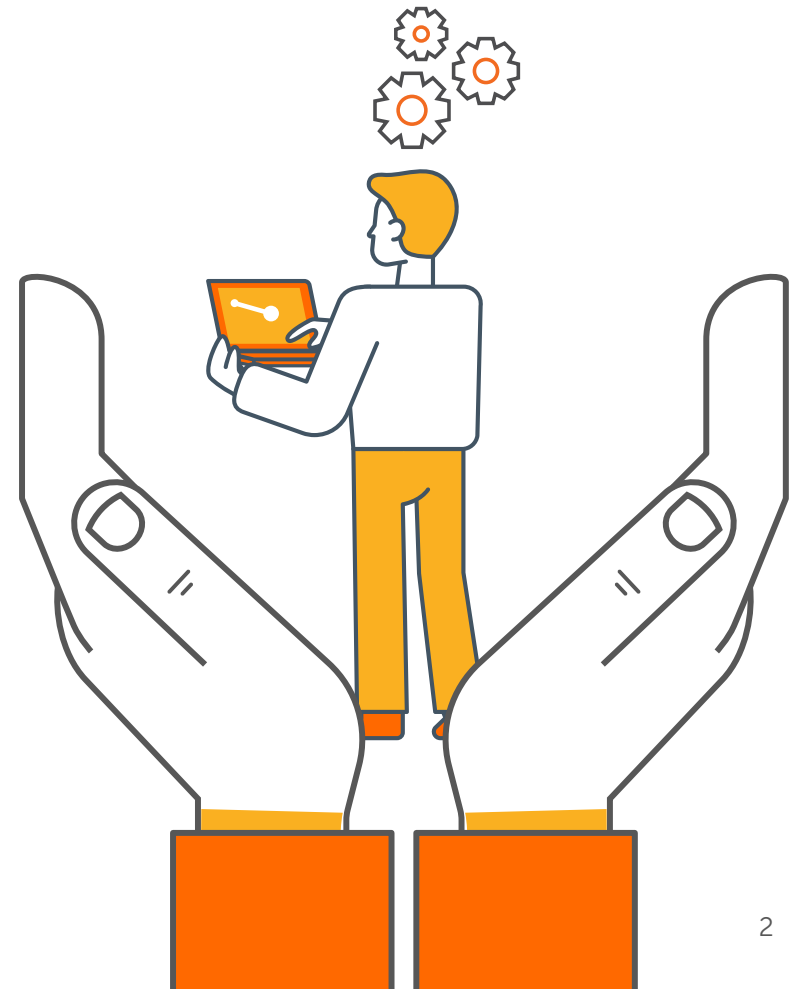
riverbed®

The Secret to Better Workforce Productivity— Better SaaS Performance



Table of Contents

- 3 Empowering the New Mobile Workforce
- 4 Slow Performance: A Drag on Business Growth?
- 5 Application Response Times are Unpredictable
- 6 Enhance Performance of Any Application, Anywhere



Empowering the New Mobile Workforce

Today's workers are more mobile and more demanding than ever. They want the same excellent mobile performance that they have come to expect from their on-premise applications despite the added complexity of cloud deployments.

What's more, today's businesses depend on application performance excellence to power workforce productivity and drive competitive advantage. In fact, many organizations report that new revenue and service delivery is the primary goal of their mobility program.

31%

increase in the likelihood employees who work remotely 60-80% of the time will make MORE progress during their workday¹

50-60%

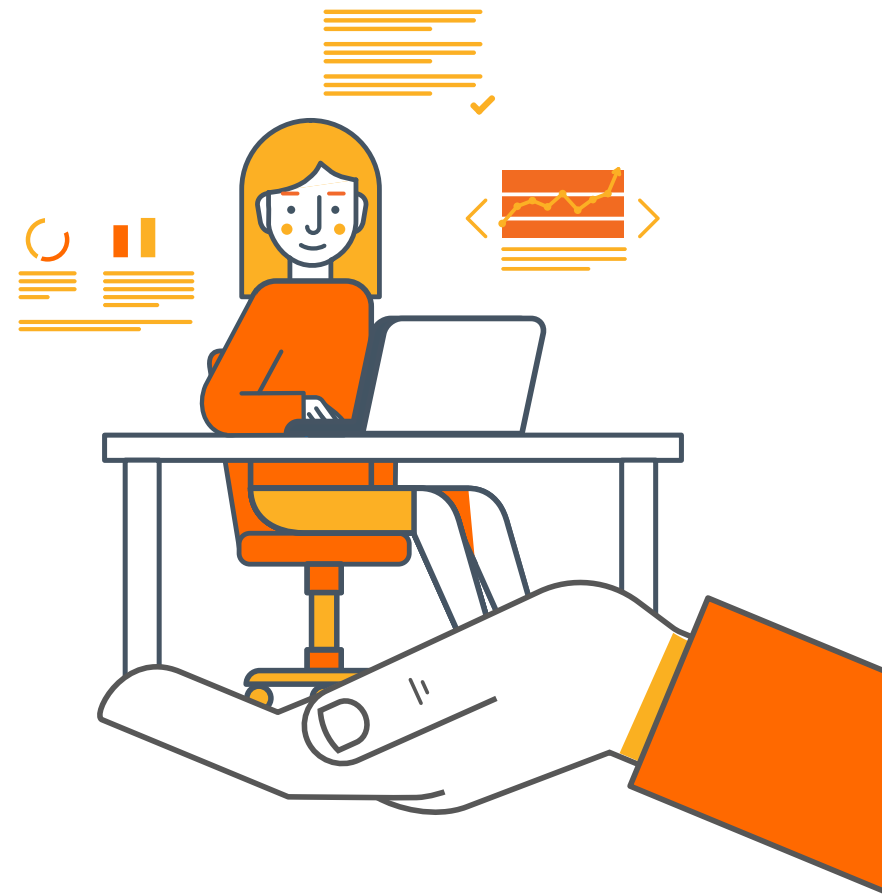
of the time employees are not physically at their desk²

45%

of large enterprises have more than 5,000 mobile users³

43%

of organizations state that the primary goal of their mobility program is to improve workforce productivity⁴



Slow Performance: A Drag on Business Growth?

Slow app performance is not just frustrating to the user, it can adversely affect the business. Unfortunately, this is commonplace in today's highly unpredictable application landscape. Meanwhile, IT teams that are responsible for supporting these dynamic apps have to contend with reduced visibility and limited control as network conditions continuously change.

42%

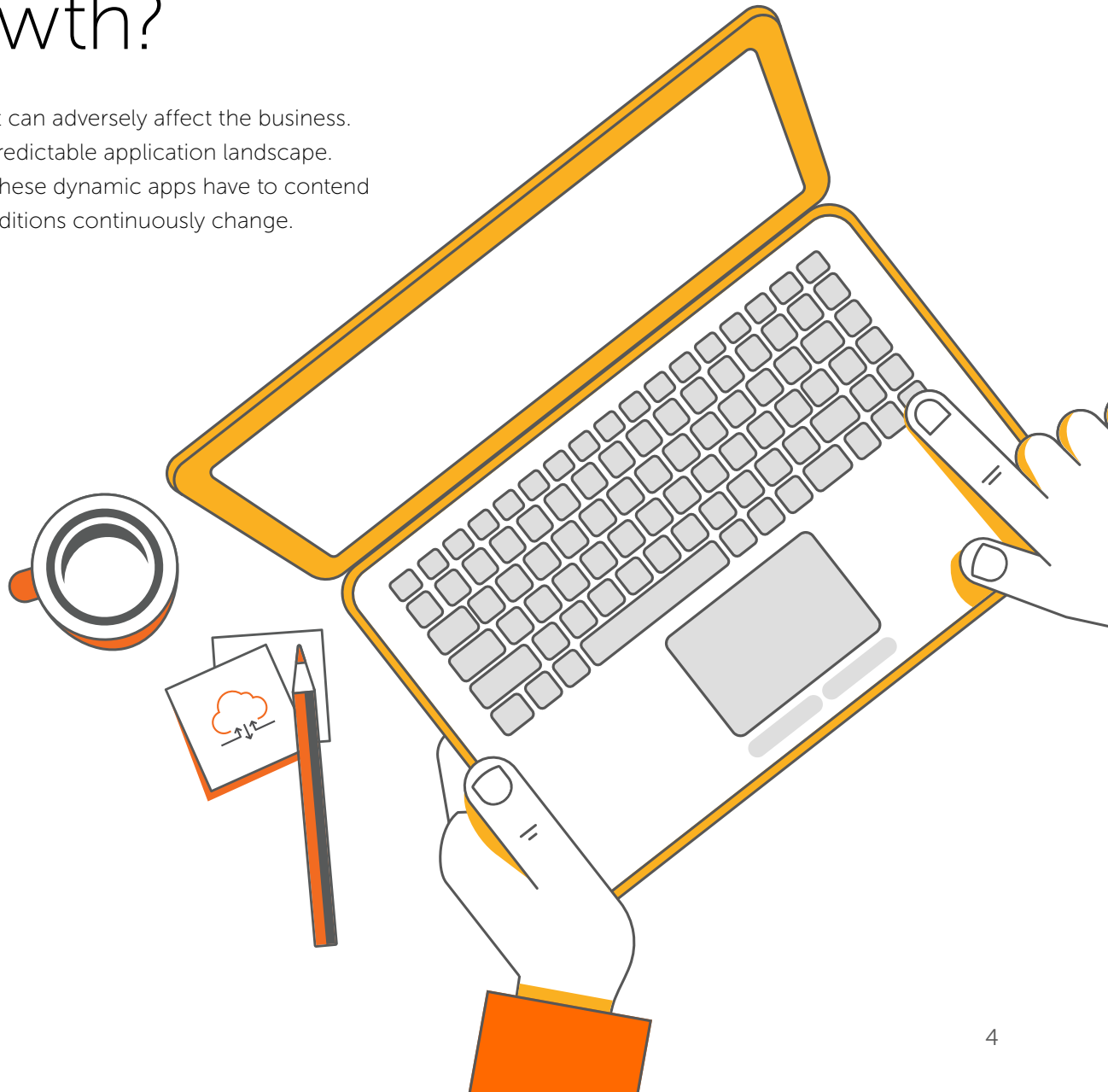
report at least half of distributed workers suffer consistently poor SaaS performance⁵

90%

report that slow SaaS performance impacts and slows business⁵

45%

of IT organizations struggle to manage devices of partners, contractors, or hourly employees who access corporate applications⁴



Application Response Times are Unpredictable

Since the global workforce frequently access enterprise applications from different locations (including very slow last mile connections), the response times will vary widely. In addition, the traditional backhauling of network traffic required by legacy architectures to maintain a corporate security posture adds additional latency and impacts performance. This "latency effect," coupled with users heightened expectations, leave IT organizations having to deal with numerous complaints because they just want a consistent experience so they can get their work done in a timely manner.

Over 50%

of IT Operations report receiving tickets issued multiple times per week or month related to slow performance⁵

More than 66%

of users access SaaS applications via backhauling through the data center⁵

87% of SaaS vendors

say it has been a challenge to meet rising customer demands for SaaS performance and 46% have said it is a significant challenge⁶



Enhance Performance of Any Application, Anywhere

Riverbed accelerates the performance of any application regardless of location while providing greater control and visibility for IT teams to manage all workloads on the network. IT departments can proactively detect issues and determine the source of delay for SaaS or on-prem applications.



Accelerate business apps **by 60x**



Improve global user experience of SaaS apps **up to 10x**



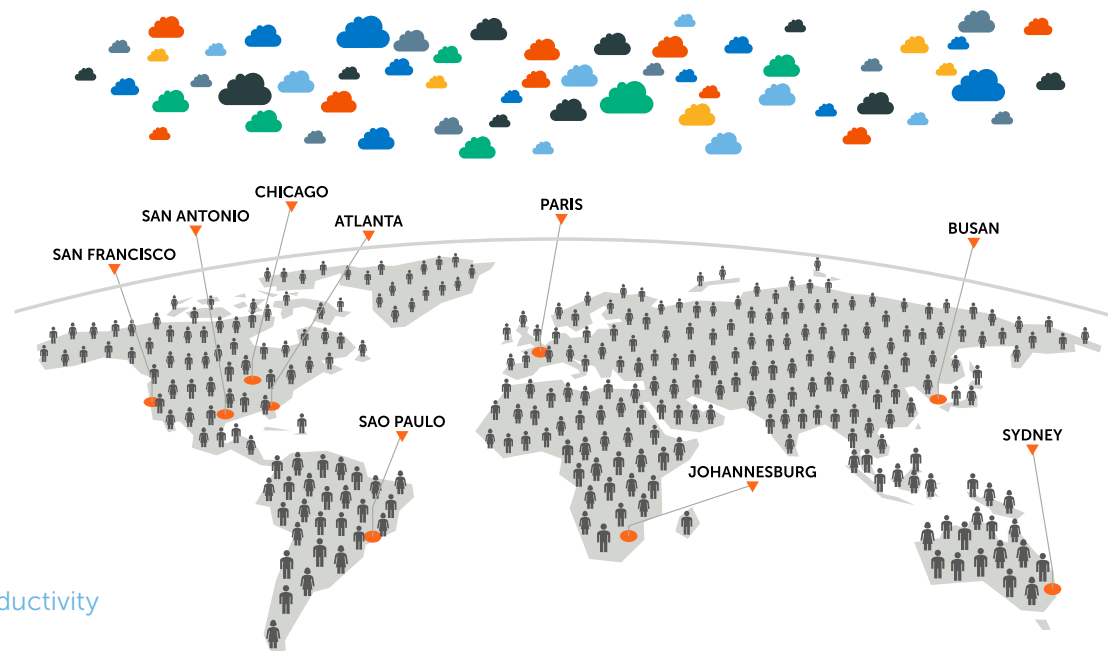
Reduce bandwidth by **up to 99%** and save on bandwidth costs



Drive greater visibility by reporting on end-to-end performance



To learn more about Riverbed's Workforce Productivity solutions visit www.riverbed.com/accelerate.



¹Gallup – How Engaged is Your Remote Workforce, March 2017

²Riverbed Essential Guide to better Digital Employee Experiences

³CITO Research, 2016 Executive Enterprise Mobility Report

⁴CITO Research, 2017 Executive Enterprise Mobility Report

⁵ESG Insights, The Impact of Poor SaaS Performance on Globally Distributed Enterprises, March 2019

⁶TechTarget Research Report, 2017 State of SaaS Performance